

## **M. DAVISON**

20 MAIN STREET,  
CARR VALE, BOLSOVER



WALLPAPERS, PAINTS, TOYS  
HARDWARE



Telephone :

**BOLSOVER 3483**



For the **BEST** in all Departments  
SHOP at

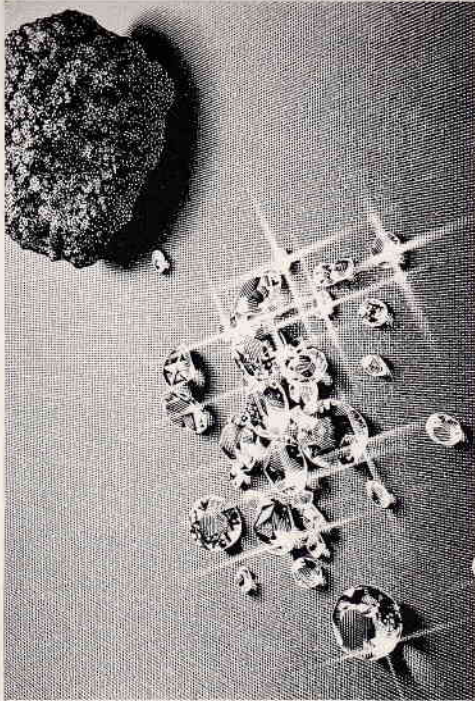
**The MANSFIELD and WORKSOP  
CO-OPERATIVE SOCIETY LTD.**

We cater for all your needs

- **QUALITY AND SERVICE** •
- IT'S ALL AT THE CO-OP NOW**

# **BOLSOVER**

**Official  
Guide**



**Coalite, like diamonds, is a form of carbon.  
Coalite, like diamonds, is precious.**

Carbon is a pretty surprising element. It turns up in some wild guises. Like diamonds. Men have killed for them. Women have succumbed for them. Fortunes have been founded on them.

Diamonds are precious.

Another of carbon's guises is known commercially as Coalite. That, too, is precious. That, too, has had a spectacular effect on people's lives. Coalite has helped to make towns and cities nicer places in which to live. Cleaner places. Happier places.

Coalite is coal with the tar oil and smoke-producing agents extracted. When Coalite burns it gives off all the good things: warmth, welcome, and a wonderfully old-fashioned glow. It does not give off the bad things: smoke and soot and sparks.

When the Clean Air Act was introduced there was a great move to Coalite. And it wasn't long before you could see the effect. The air became cleaner and fresher. The sky bluer.

In fact, when you burn Coalite, you're making ours a better country in which to live. And yours a warmer home.

**Coalite**

Fresh Air Fiends

**A. L. WILSON & CO., M.N.A.E.A.  
ESTATE AGENTS**

Sales of Houses, Land and Business Premises, etc., Rents Collected, Properties Managed, Mortgages Arranged, all classes of Insurance transacted.

**LOCAL AGENTS FOR HALIFAX BUILDING SOCIETY**

at

**9 Station Road, Bolsover 2138 • Broadleys, Clay Cross 862911**

**TRAVEL AGENTS  
FOR MOST LEADING OPERATORS**

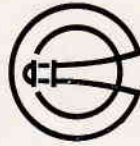
**ARRANGE YOUR HOLIDAY THROUGH  
A. L. WILSON & CO.**

22

Established 1910

**W. BAGGULEY & SONS**

**BUILDING CONTRACTORS**



**REGISTERED  
HOUSE-BUILDER**

**MOOR LANE  
BOLSOVER**

Telephone : BOLSOVER 3116

16

1

“JUNE”

Phone : BOLSOVER 3250

*Ladies' Hair Stylist*

Personal attention at all times Old and New Clients made welcome

**30 MARKET PLACE · BOLSOVER**

*For Pleasure and Comfort —*

**HIRE  
A BUS  
OR A  
COACH**

**CALL**

**WRITE**

**or**

**TELEPHONE**

**FOR  
YOUR  
PRIVATE  
PARTY**

**EAST MIDLAND MOTOR SERVICES LIMITED  
NEW STREET · PARK ROAD · CHESTERFIELD 77451**

**DAVE HALLAM**

**HIGH CLASS GREENGROCER  
AND FLORIST**

**3259**

**4 TOWNEND, BOLSOVER**

Phone : Bolsover 3316

**W. H. BUCK**

**The Grove, Station Road,  
Bolsover**

**Builder and Joiner**

**All types of Conversions Property Repairs**

**High-Class Joinery**

**Central Heating and Plumbing**

ESTABLISHED 1904

**Stubbins & Hope**

**FUNERAL DIRECTORS**

PROPRIETOR: MRS. STANLEY HOPE

Member of the National Association of Funeral Directors

**THE MOST COMPLETE AND EFFICIENT SERVICE**

Chapel of Repose and Rest Rooms

CREMATIONS ARRANGED

**55 High Street · Bolsover**

**Telephone 3355 (Day) & 2403 (Night)**

## **WYCHERLEY'S THE CHEMISTS**

(Proprietor: J. G. MOUNTAIN, M.P.S.)

### **MARKET PLACE BOLSOVER**

TELEPHONE 2320

National Health Prescriptions Dispensed  
Photographic Supplies  
Cosmetics and Toiletries  
Carter's Garden Seeds  
Fertilisers and Insecticides

**"Try us First"**

9

## **JUNE ROBINSON**

**MARKET PLACE**

**TOYS \* GREETING CARDS \* STATIONERY**

Agents for MECCANO, AIRFIX, MORO  
CORGI, PALITTOY TOYS

Also RUSTCRAFT, VALENTINE  
STAFEX CARDS

8

# **Bolsover Official Guide**

Published by authority of  
the Urban District Council



© Ed. J. Burrow & Co. Ltd., Publishers, Cheltenham and London



# COAL

## the CAPITAL asset OF N. DERBYSHIRE!

### COAL'S VITAL STATISTICS:-

**£46,000,000**

Coalmining in North Derbyshire is big business. The annual turnover in this, one of the major industries is in the region of £46,000,000.

**9,700,000**

Tonnage of this order comes from North Derbyshire's 14 collieries each year. During the last fiscal year 9,776,584 tons of coal were produced — a massive contribution to the Nation's fuel requirements.

**14,700**

This number of men are employed in the local coalfields and the pits urgently require more so that output can be still further expanded.

**£606,000**

The North Derbyshire's coal industry contributes amounts of this sort in local rates each year, so helping to provide social and welfare amenities for the benefit of all.

**- IT ALL ADDS UP TO ONE OF  
THE COUNTY'S BIGGEST  
BUSINESSES !**

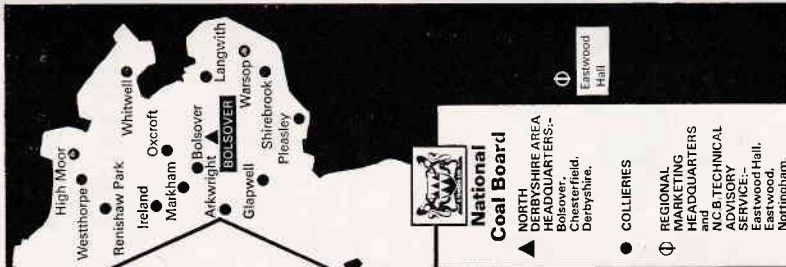
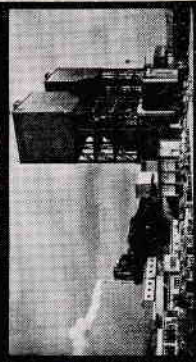
### RECORD BREAKING PITS

The North Derbyshire Area collieries lead the country in output per man. High tonnages are consistently produced at such collieries as Markham, Shirebrook, High Moor and Arkwright, just to mention a few.

**MARKHAM**



**WARSOP**



## Contents

	Page
The Council and its Officers 1971/72	9
Bolsover—80 years an Urban District	11
Leisure	17
Features of Bolsover	19
Bolsover's Surroundings	21
Local Services and Information	23

All Photos by F. Rollin, Esq.

## REG DAKIN MOTOR ENGINEERS WHALEY SERVICE STATION WHALEY

M.O.T. Testing for ALL GROUPS

Car Bodywork and Spraying and Insurance Repairs  
ALL MAKES of NEW and Second-hand CARS SUPPLIED  
CRYPTON TUNING Car Overhauls and General Repairs  
Vehicle Insurances Gas and Electric Welding

Telephone : CRESSWELL 291

# Council of the Urban District Bolsover 1971-72

**CHAIRMAN: Councillor F. Cross**

**VICE-CHAIRMAN: Councillor J. Spray**

## North Ward

Councillor F. Cross  
Councillor Mrs. V. Dowd  
Councillor R. Raben

## Central Ward

Councillor J. Spray  
Councillor A. R. Drury  
Councillor W. B. Revill

## West Ward

Councillor W. A. Taylor  
Councillor S. J. Clarke, J.P.  
Councillor J. W. Bluff

## South Ward

Councillor S. T. Fisher  
Councillor E. R. Davies  
(Vacant)

## Officers of the Council

Clerk of the Council  
Engineer and Surveyor  
Medical Officer of Health  
Public Health Inspector  
Chief Financial Officer

F. Rollin  
C. I. Margerrison, T.D., C.Eng.  
Dr. M. J. Cash, M.R.C.S., L.R.C.P.,  
D.P.H.  
J. F. H. Walton, M.R.S.H., M.A.P.H.I.  
D. R. Evans

## Member of Parliament for the Parliamentary Constituency of Bolsover

D. E. Skinner, Esq., 86 Thanet Street, Clay Cross.

## Justices of the Peace

Mrs. B. N. Margerrison, J.P., 49 High Street, Bolsover.  
Mrs. M. Lane, J.P., The Pingle, Hill Top, Bolsover.  
Clfr. S. J. Clarke, J.P., 20 Bainbridge Road, Bolsover.  
H. S. Batty, Esq., J.P., 61 Castle Lane, Bolsover.  
G. Howard, Esq., J.P., Farnsworth Farm, Welbeck Road, Bolsover.  
R. A. Chambers, Esq., J.P., 10 Rutland Avenue, Bolsover.



Old Peoples Houses, Portland Crescent

Hill Top and Station Road





# Bolsover 80 years an Urban District

Under the Government proposals for the reform of Local Government, Bolsover Urban District will become part of a larger area and will cease to exist on the 1st April 1974.

The Council's first meeting was held in the Portland Cafe, Town End, Bolsover, (the Plaza Cinema now stands on the site) on the 31st December, 1894, and the Rev. T. C. Hills, the Vicar of Bolsover (after whom Hillstown was named) was the first Chairman.

Prior to the creation of the Urban District, Bolsover was a small agricultural market town, with stone houses around the Castle and farms around the grassy market place on which stood the village pump. The only other industry, apart from agriculture, had been the manufacture of buckles and clay pipes. As collieries were sunk in the neighbourhood so the population grew, from 2,281 in 1881 to 3,662 in 1891, but the great surge in population followed the sinking of the Bolsover Colliery in 1891 and the Oxcroft Colliery in 1901, when the population increased so rapidly that by 1905 it exceeded 10,000.

The rapid expansion of the population created great difficulties and in order to appreciate the achievements of the Council it is well to study the conditions that existed at the time of the formation of the Urban District; the main transport was by horse and cart along roads that were dusty, rutted and ill formed; the water was from the well or the village pump; lighting was by the trimmed lamp or the candle; sewers and refuse collection were non-existent; sanitation was provided by a privy midden at the bottom of the yard or garden, epidemics were a yearly occurrence in fact the conditions of life of the ordinary people in 1890 had changed little since the Middle Ages.

The problems of those early years are best described by the Medical Officer of Health at that time, and the following extracts from his Annual Report are very informative. In 1897 he reported "that scavenging is left to the zeal of the individual and cases of overflowing ashpits and privies are not too difficult to find", again in 1899 he reported "the district should be publicly scavenged—this is still not carried out." In 1895 he reported that "the crude sewage flowed into an open ditch", and in 1899 he "regretted that another year had gone by and the Sewage Disposal Scheme had not been commenced." His comments with regard to the water supply were very scathing. In 1897 he reported "that Shuttlewood was practically without water of any kind, and it was a daily occurrence to see water being carried from Bolsover in all sorts of vessels". Again in 1899 he said "sooner or later a water supply will become an absolute necessity—women have told me that they cannot make tea or feed children until their husbands returned from work to get water."



Photo: F. Rollin, Esq.  
Council Houses, Portland Avenue, Bolsover

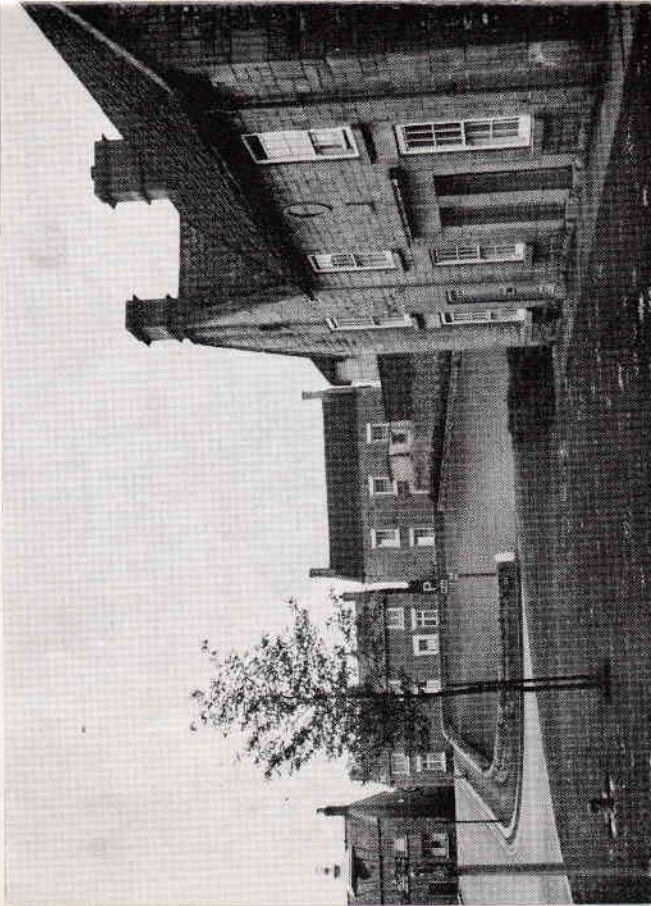


Photo: F. Rollin, Esq.  
Middle Street and High Street, Bolsover

---

## BOLSOVER URBAN DISTRICT COUNCIL

### IMPROVE YOUR HOUSE WITH A GRANT

Non-repayable grants are available to house-owners towards the cost of modernising sound older houses.

The Council will pay half the cost of installing a bath, a wash hand basin, a sink, hot and cold water to those fittings and an inside closet. For thorough repair and modernisation of suitable old houses to a high standard, grants of up to £1000 can be given.

Applications for grant must be approved by the Council before the work may be commenced.

Full particulars can be obtained from the Public Health Inspector, Council Offices. Tel.: Bolsover 3255.

## BOLSOVER URBAN DISTRICT COUNCIL

### RUBBISH!

The Council will collect and dispose of bulky household refuse free of charge—such as unwanted furniture, mattresses, cookers, etc. Do not dump them or litter the countryside. Ask your regular refuse collection team or contact the Public Health Inspector at the Council Offices. Tel.: Bolsover 3255.

Householders may take refuse to the Council's tip at Carr Vale where it will be accepted free of charge—Mondays to Fridays 1.30 p.m. to 3.30 p.m. Old cars (wrecks or runners) can be disposed of by your Health Department.

Business and trade refuse can be deposited at the Council's tip at a charge of 25 p per load up to 2 tons, and 50 p per load over 2 tons.

### SAVE NEWSPAPER — SAVE THE RATES

Waste paper and cardboard collected from houses and shops is baled and then sold for about £2500 per year—helping to keep down the cost of rates.

A special weekly collection is provided for shop and business premises and all householders have been issued with polythene sacks for storage of waste paper and cardboard. These sacks are returned to householders after emptying and will be replaced as required by the refuse collection teams.

**You are helping yourself by saving paper for the Council's collectors!**

---

With regard to Public Health matters, in 1900 he reported severe epidemics of influenza, measles, whooping cough, scarlet fever and diphtheria; in 1901 there was an epidemic of typhoid fever at New Bolsover causing 3 deaths; in 1903 he said there was need for an Isolation Hospital when he reported 86 cases of scarlatina, 42 cases of erysipelas, 5 cases of smallpox and 19 cases of enteric fever; in 1904 he closed all schools when there was between 1,500 and 2,000 cases of measles that caused 15 deaths. In 1902 he reported that 46 deaths occurred in children under 1 year of age—which compared favourably with 1901 when 68 deaths occurred in under 1 year.

In 1904 he said "the state of roads had a most important bearing on the health of the district, accumulations of filth and stagnant pools being decidedly detrimental to health." In 1908 his urgent requirements were—measures for dust prevention in the streets and the conversion of the filthy privy middens.

Such were the difficulties that existed when the Urban District was formed in 1894 and the records of the Council's achievements over the period of 80 years are everywhere to be seen. Over 1,200 modern houses have been provided, the latest aged persons' accommodation has district heating, and there are seven aged persons' schemes of 134 houses that are warden assisted. Over 800 houses have been improved with the aid of Improvement Grants made by the Council. There are over 80 acres of recreation grounds and open spaces, public halls have been provided and an Elder Citizens' Centre is available to all aged persons in the district. All-year swimming is provided at the Public Baths. The Cemetery is so well laid out and maintained that it attracts attention to all who visit. There are first class roads with street lighting up to Ministry standard. All houses are sewered and there is a weekly refuse collection. The Council have recently let a tender for £400,000 for renewing sewers and rebuilding all sewage works.

The history of Urban District Councils is the history of the 20th Century, when the conditions of life that had existed since the Middle Ages were all swept away. It is to the credit of local democracy, of the ordinary people of the district (mainly working men) who became Councilors and gave of their time freely and in a period of 80 years created a modern society. It is hoped that the Councils which succeed the Urban Districts will be as successful.





## BOLSOVER URBAN DISTRICT COUNCIL

### ASK AT THE COUNCIL OFFICES

- DO YOU require an Improvement Grant to help modernise your house?
- DO YOU require advice as to how to improve your house with the aid of an Improvement Grant?
- DO YOU require a Council loan, in addition to an Improvement Grant, to help pay for improvements to your house?
- DO YOU require advice as to how to apply for planning permission?
- DO YOU wish to erect a garage or to make small additions to your property?
- DO YOU wish to apply for a Rate Rebate, either as a Rent payer or as a Ratepayer?
- DO YOU wish to pay your rates by ten monthly instalments?
- DO YOU wish to apply for the tenancy of a Council house?  
When your drain is made up.  
When you are plagued with rats or mice.

ASK AT THE COUNCIL OFFICES—  
SHERWOOD LODGE, BOLSOVER Tel.: Bolsover 3255

## BOLSOVER URBAN DISTRICT COUNCIL

### RATE REBATES — DO YOU QUALIFY

If your income is small and your rates are not fully covered by Supplementary Benefit from the Ministry of Social Security you are almost certainly entitled to a Rate Rebate regardless of whether you are earning or retired, or whether you pay rates yourself or instead pay an inclusive rent to the Council or a private landlord. You may qualify for a Rate Rebate if your recent gross income averaged not more than £10 per week if you are single, widowed, separated or divorced, or £12.25 per week if you are married, plus in either case £2 for each dependent child.

Applications should be made to the Rates Office before 30th April for rebate in the first half year and before 31st October for rebate in the second half year.

## Leisure

### Parks and Open Spaces

Parks and open spaces in the Urban District include the Hornscroft Recreation Ground, King George's Playing Field, Sherwood Lodge Grounds and Dykes Field, all in Bolsover; ornamental gardens at Carr Vale and recreation grounds at Whaley, Shuttlewood, Stanfree and New Bolsover. The fields on the hillside up to the Castle also form a pleasant open space and they are owned by the Urban District Council.

### Sport

**BOWLS** can be played on the public green at Hornscroft Recreation Ground. There are also greens belonging to the Castle Bowling Club, the Miners' Welfare at Bolsover and Oxcroft, and the Coalite Sports Club.

**CRICKET** There are cricket grounds provided by the Bolsover Miners' Welfare at New Bolsover and the Coalite Sports Club in Moor Lane. Bolsover Miners' Welfare have two teams in the Basetlaw League.

**FOOTBALL** The principal teams are Bolsover Miners' Welfare, Bolsover Town Y.C. and Carr Vale United, which play in the Sutton and Skegby League, and Coalite Sports which play in the Mansfield League.

## PREW-SMITH (Bolsover) LTD.

### VACANCIES

We make very attractive ranges of Ladies', Men's and Children's Underwear, Swimwear and Casual Shirts.

If you are an experienced machinist, come along now and see what we have to offer.

If you are young with no experience, we will quickly train you for a highly paid career.

Pleasant working conditions with good rates of pay. Modern canteen. Company shop. Work buses from most areas. Training school.

*Telephone, call or write to*

Mrs. Naylor, Oxcroft Lane, Bolsover. 3135

**GOLF** The nearest courses are at Chesterfield. These are Chesterfield Golf Club, whose 18 hole course is at Walton; the Stanedge Golf Club, whose 9 hole course is near Walton, and the Chesterfield Municipal course of 18 holes at Murray House, Tapton, Chesterfield.

**SWIMMING** At Castle Lane are the Public Baths, the opening times of which are given under "Local Services and Information".

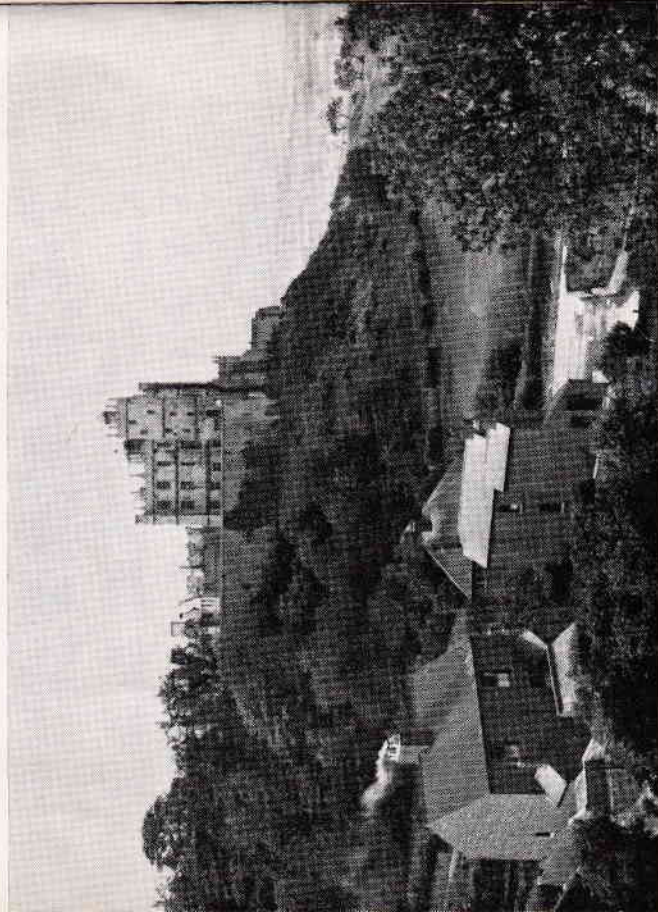
**TENNIS** There are public tennis courts in Hornscroft Recreation Ground and others belonging to the Bolsover Miners' Welfare.

## Entertainments

Bolsover has no cinema but the Assembly Hall and other local halls are used for amateur plays, socials, concerts and other events, and the Urban District is quite well provided with clubs and organisations. The nearest cinemas are at Chesterfield and there too is a Civic Theatre with a highly regarded repertory company. There are other theatres at Sheffield.

Photo: F. Rollin, Esq.

Bolsover Castle



## Features of Bolsover

The Urban District of Bolsover covers seven square miles and consists of several distinct settlements with a good deal of open farming country in between. Bolsover itself stands high on its hill in the centre of the southern half of the district with some of its new housing (in the Moor Lane area) extending up to the boundary of Blackwell Rural District. On its western side the land slopes steeply down to the valley of the River Doe Lea with its colliery and chemical works and the mining districts of Carr Vale and New Bolsover. To the north the urban district extends for almost three miles to include the villages of Shuttlewood and Stanfree as well as the Oxcroft Colliery and various quarries and other industries. One the east side the urban district extends a finger of land across the A618 Mansfield Road and extends past Scarcliffe Park to include the small village of Whaley which is only a mile or so from Shirebrook. Much of this end of the district is good farmland and is also quite well wooded. BOLSOVER CASTLE, preserved by the Ministry of the Environment since 1945, stands superbly on the brow of a hill 600 feet above sea-level. Motorists for the first time on the M1 Motorway in the valley are intrigued to find such a commanding Castle. The site has a long history which goes back to Norman times when the Conqueror gave the land to William Peveril. A keep was built at that time and the present keep or "little castle" stands on its site.

Most of the present building dates from the 17th century, and it is a rather remarkable array of architectural glory. Sir Charles Cavendish leased the Castle from the Earl of Shrewsbury in 1613 and built the keep and other buildings in a rather "romantic" medieval style complete with turrets, battlements and cupolas. Sir Charles Cavendish died in 1617 and his son William Cavendish, who became the first Duke of Newcastle, added more buildings including the Riding School and the Terrace Buildings (now ruinous) with superb views across the valley. This and the state rooms were said to have been completed by 1634 when the Duke of Newcastle entertained King Charles I and Queen Henrietta Maria here in a most lavish manner at a cost exceeding £14,000. Ben Johnson wrote a masque "Loves Welcome" for the occasion.

Particularly interesting features of the Castle include the Bailey Wall, a Norman fortification once battlemented, and The Keep, which contains about thirty apartments. The main entrance is particularly impressive. Many of the rooms are beautifully panelled and decorated, the fireplaces especially being very handsome.

The buildings at Bolsover Castle are amongst the most interesting 17th century buildings in England, and as one wanders through the sombre roofless ruins of The Terrace today, one can gain some idea of the splendour that must have been within these walls when they were newly built. The Riding School and Smithy buildings have recently been restored by the Department of the Environment.



The last two residents of the Castle were Vicars of Bolsover—the Rev. W. C. Tinsley until 1829 and the Rev. Hamilton Grey from 1829 to 1866. His widow resided there until 1883.

The Castle is open throughout the year as follows:—

May to September—9.30-19.00 weekdays—14.00 to 19.00 Sundays  
March, April and October—9.30-17.30 weekdays—14.00 to 17.30  
Sundays

November and February—10.00-16.30 weekdays—14.00-16.30 Sundays  
THE PARISH CHURCH stands back behind the town centre and is also quite close to the Castle. It was founded in Norman times and rebuilt, to Ambler's designs, in 1897 after almost total destruction by fire. The west tower, however, survives from the 13th century and the Cavendish Chapel, built in 1624 was also spared the fire. The interior of the Church and the roof were again destroyed by fire in 1960 but rebuilt.

Features of interest include the 13th century sculptured tympanum of the Crucifixion, a late 13th century crucifixion of a nativity scene; a 17th century chalice and, in the Cavendish Chapel, two superbly ornate monuments that are a century apart in age. One, to Charles Cavendish, dates from 1617 and shows him with his wife and kneeling children whilst the other, a vast marble monument with Corinthian columns and a black sarcophagus, is dated 1727 and is to Henry Cavendish, his wife and one of his daughters.

THE CONGREGATIONAL CHURCH dates from 1630—or at least it does so by repute. The history of Congregationalism in the town dates from the Civil War when Cromwell's troops captured and garrisoned the Castle.

In 1645 the Presbyterian and Independent elements in their army consolidated the chapel. After the passing of the Act of Uniformity and the Five Mile Act, services were secretly carried on in the church during the night and early hours of the morning. This continued until 1688 when all shades of religion (except Roman Catholics) were once more free to worship as they pleased. A new church in Castle Street was opened in 1893.

## Bolsover's Surroundings

Standing as it does, close to the Derbyshire-Nottinghamshire border, Bolsover is well placed for exploring both counties.

Chesterfield, closest at hand, is a large manufacturing town but one with several features of interest. The beautiful medieval church with its twisted spire is known the country over but also of interest is the 17th century Revolution House at Old Whittington, a house that was used in connection with the plotting of the 1688 Revolution.

An interesting house to the north of Bolsover is Barlborough Hall, a romantic Elizabethan house that was built about 1585 and is now used as a college. It may be viewed on Wednesday and Saturday afternoons during August from 14.30 to 17.30.

Nearer to Bolsover, and between it and Mansfield is Hardwick Hall, a National Trust house of outstanding beauty. It was built between 1591 and 1597 by "Bess of Hardwick" and it houses fine furniture, needlework and tapestries—all true to their period. The house stands in a garden of yew hedges and borders. It is open from Easter to late October—

CONSULT

## T. A. PAGE & SON

HIGH CLASS DECORATORS  
FOR INTERIOR AND  
EXTERIOR WORK  
WALLPAPERS, PAINTS

6 TOWNEND, BOLSOVER

Telephone : Bolsover 2182

Telephone : Staveley 2821

Telephone : BOLSOVER 2228

## GILLWAY - MAPPIN LIMITED

WELDING & CONSTRUCTIONAL ENGINEERS

Steel Fabrications - Erecting and Dismantling

Roofing and Glazing - Works Maintenance - Painting Contractors

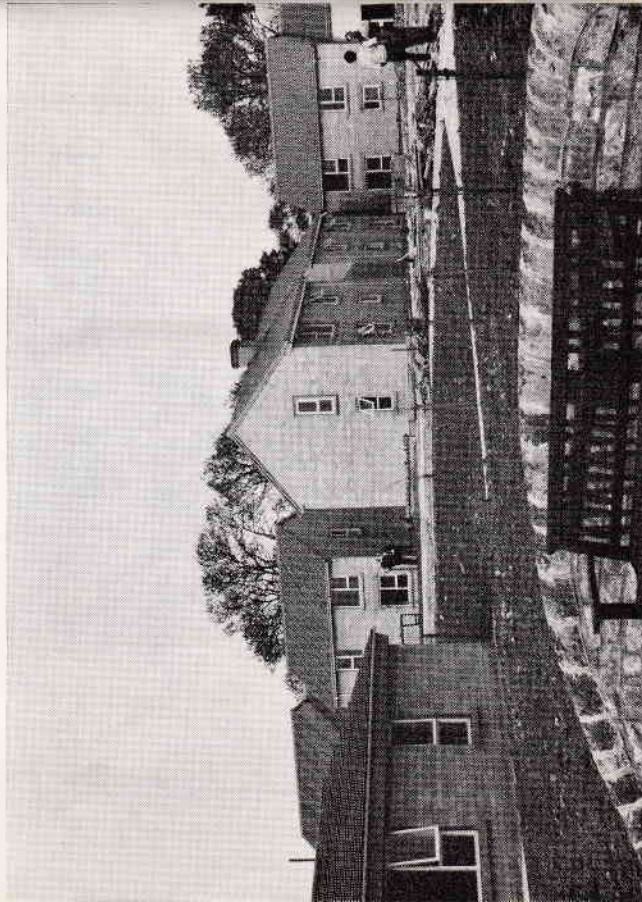
QUARRY ROAD, BOLSOVER, DERBYSHIRE

from 14.00 to 18.00 on Wednesday, Thursday, Saturday and Sundays and Bank Holidays.

Also quite close on the "Derbyshire side" of Bolsover are Bakewell, an attractive town on the River Wye; the village of Eyam with its plague history; Matlock with its gardens and river and the famous tramway museum at Crich. This museum, with its horse, steam and electric trams, is open during daylight hours at weekdays and Bank Holidays. Also of great worth are the houses of Chatsworth and Haddon Hall. The former, in its vast estate, was built by the 1st Duke of Devonshire and its fine rooms, theatre gallery and gardens may be seen from April to October on Wednesdays, Thursdays, Fridays, Saturdays and Sundays—from 11.30 to 16.00. Haddon Hall, a much older house that blends medieval and later work, is open daily (except Sundays and Mondays) from 11.00 to 18.00 from April to September.

East of Bolsover are the great estates of the Dukeries—Welbeck, Clumber and Thoresby. Welbeck is used as a college and is not open. Clumber has been demolished but the private chapel now belongs to the National Trust and may be seen from 14.00 to 18.00 daily from Easter to the end of September. Thoresby Hall is a vast Victorian mansion that was built by Salvi in 1864 and is still preserved as it was when Distraeli lived here. It is open from 12.30 to 18.00 at various times between Easter and late September.

#### Hides Green, Hill Top



## Local Services and Information

### Emergency Services

POLICE

Your local Station is RENISHAW POLICE STATION. Tel. Eckington 2181.

AMBULANCE

County Council Ambulance Service. Tel. Chesterfield 6282.

FIRE BRIGADE

County Council Fire Station. Tel. Chesterfield 75986.

IN EMERGENCY

Dial 999 for above services.

### Essential Services

Service Enquiries

ELECTRICITY

East Midlands Electricity Board, 172 Chatsworth Road, Chesterfield. Tel. Chesterfield 4111.

GAS

East Midlands Gas Board, Lime Tree Place, Mansfield. Tel. Mansfield 22500.

WATER

North Derbyshire Water Board, West Street, Chesterfield. Tel. Chesterfield 75901.

## NORMAN & LUDLAM

HOME IMPROVEMENT CENTRE

All types of kitchen fittings, ceiling floor and wall tiles and all handyman's requirements

Deliveries to all surrounding districts

31 MARKET PLACE, BOLSOVER

Telephone 3107 (business) and 2370 (residence)

## General Information

**ACCESS TO M1 MOTORWAY AREA**  
 North, Barlborough. Access Point 30—4 miles. South, Heath. Access Point 29—4 miles. 4.526 acres.

**ASSEMBLY HALL**  
 Public Hall—Available to all organisations, private bookings, weddings. Charges per hour—Charities 20 p; organisations 40 p; general use 80 p. Small rooms available at half the above charges (Tel. Bolsover 3255).

**BATHS**  
 The Public Baths are located in Castle Lane, Bolsover. Tel. Bolsover 3271.

Opening times for general bathing are as follows:—  
 Mon. to Fri. 16.15 to 18.30  
 Sat. 9.00 to 12.00 and 13.30 to 17.00.  
 Sun. 9.30 to 12.30.

**BANKS**  
 During school holidays (additional times Mon. to Fri.)—9.00 to 12.00 and 1.30 to 18.30.  
 Midland Bank, 5 Town End. National Westminster Bank, 36a Market Place, Nottingham. Trustee Savings Bank, 2 Cotton Street.  
**CAR PARKS**  
 Town Centre—Cotton Street, Middle Street, Church Street, Kitchen Croft.

## Churches and Chapels

**CHURCH OF ENGLAND**  
 SS. Mary & Laurence (Parish Church), High Street, St. Lawrence, Chesterfield Road, Shuttlewood.

**ROMAN CATHOLIC CONGREGATIONAL METHODIST**  
 St. Bernadette, High Street.  
 Castle Street, Main Street, Carr Vale.  
 Trinity Church, Hill Top Town End. Charlesworth Street, Carr Vale. Chesterfield Road, Shuttlewood. New Bolsover.

**PENTECOSTAL CITIZENS' ADVICE BUREAU**  
 High Street.  
 Town Hall, Chesterfield. Tel. Chesterfield 77232 Ext. 284.

**CLINICS**  
 Mon., Tues., Thurs., Fri.—10.00—12.30 and 14.00—16.30. Wed. 10.00—12.30.  
 Derbyshire County Council, Welbeck Road, Tel. Bolsover 3146.

**CERVICAL CYTOLOGY**  
 2nd and 3rd Fri. each month 1.30—16.00.  
**INFANT WELFARE** Tues.—all day 9.30—12.30—13.30—16.15.

**CHIROPODIST**—Mon. 9.30—12.00. Old Age Pensioners—Thurs. 9.30—12.30. 13.30—16.00.

**COUNCIL OFFICES**  
 All Departments, Sherwood Lodge, Bolsover. Tel. Bolsover 3255.

**CUSTOMS AND EXCISE**

**DOCTORS**

Drs. DENT, HUGHES LANE and BONAR

Drs. MAY and WILSON

**EARLY CLOSING DAY**

**EDUCATION**

Schools are provided by the Derbyshire County Council Education Department. The Divisional Office is at the "Cedars", 48 Newbold Road, Chesterfield. Tel. Chesterfield 71509. The following schools are provided in the Urban District:—

**PRIMARY**  
 Bolsover C of E Junior School, New Bolsover County School, Welbeck Road County Infants School, Shuttlewood, Brockley County Junior School, Stanfree County Infants School.

**SECONDARY**  
 Moorfield County Secondary School, Welbeck Road County Secondary School (Boys), Bolsover County Secondary School (Girls).

There is a Comprehensive School at nearby Shirebrook, Grammar Schools at Chesterfield and Netherthorpe and at Chesterfield are a College of Art and College of Technology.

**EMPLOYMENT EXCHANGE**

**HEALTH AND SOCIAL SECURITY**

**HOSPITALS**

Kitchen Croft, 9.30—12.00 Tues. and Thurs. Tel. Bolsover 2304 and Chesterfield 3281.  
 Kitchen Croft, Thursdays 14.00 to 16.00. Tel. Bolsover 2304 and Chesterfield 79191  
 Chesterfield Royal Hospital. Tel. Chesterfield 77271. Also Scarsdale, Penmore and Walton Hospitals—all at Chesterfield.

**INDUSTRIES**

Local industries include coal mining, the manufacture of smokeless solid fuel and chemicals; hosiery; stone quarrying; steel fabrication and wrought ironwork and farming.

**INLAND REVENUE**

Collector of Taxes, Markham House, Markham Road, Chesterfield. Tel. Chesterfield 79292. Inspector of Taxes, No. 2 District, 35 St. Mary's Gate, Chesterfield. Tel. Chesterfield 79292.

22 Knifesmith Gate, Chesterfield. Tel. Chesterfield 77479. Mon., Wed., Fri.—11.00—12.00.

Surgery, Welbeck Road, 9.00 and 16.30 to 18.00 daily, Sat. 9.00—10.00. Tel. Bolsover 2100 or 2416 or call to make an appointment. Surgery, Welbeck Road, 9.00—10.00 daily and 17.00—18.00 daily except Wed. Sat. 9.00—10.00. Tel. Bolsover 3223.

Wednesday.



# *Bagguley's*

## *Ironmongers*

*Builders' and Plumbers' Merchants*

TEL. **BOLSOVER** 3116

**STOCKISTS OF CALOR GAS**

16

## **CASTLE LANE MOTORS**

### **CARR VALE**

**24 HOUR RECOVERY SERVICE**

All Accident Damage Repairs  
Resprays

**QUALITY SECOND-HAND CAR SALES**

M.O.T. Testing Station

Telephone : **BOLSOVER** 3402/3412

14

### LIBRARY

County Library, Cotton Street. Tel. Bolsover 3179. Opening hours—10.00-19.00 daily. 10.00-13.00 Sat.

### MAGISTRATES COURT (COUNTY)

Brimington Road, Chesterfield. Tel. Chesterfield 77435. Every Wednesday and alternate Tuesdays and Thursday at 10.00 hours.

### MARKET DAY

Friday

62 Friar Gate, Derby, DE1 1DJ. Tel. Derby 49177.

### MARRIAGE

### GUIDANCE

### COUNCIL

### NEWSPAPERS

*Derbyshire Times*. Published on Fridays from Station Road, Chesterfield. Tel. Chesterfield 77024.

### POPULATION

### POST OFFICE

11,690.

Bolsover Post Office, 10 Cotton Street. Tel. Bolsover 3216. 9.00-13.00. 14.00-17.30 daily.

9.00-12.30 Sat. Sub-Office at Carr Vale, New

Bolsover, Shuttlewood, Stanfree and Whaley.

22 Knifesmith Gate, Chesterfield. Tel. Chester-

field 77479. Tues. 10.30-13.00. 14.00M16.00.

Assembly Hall, Bolsover. Tues. and Thurs.

9.30-10.30.

Newbold Road, Chesterfield. Tel. 4754.

New Beetwell Street, Chesterfield. Tel. Chester-

field 76409.

£428,808.

Commercial 82 p; Mixed 77½ p; dwelling

houses 72½ p.

Oxcroft Lane, Bolsover. Tel. Bolsover 3551.

Child Care, Mental Welfare, Educational

Welfare, Home Teachers of the Blind, Occupa-

tional Therapy, Home Help Organiser, Meals

on Wheels Service.

Bus Services—Chesterfield Corporation.

Bolsover/Chesterfield (Mooracre Lane)

Service 42.

Hillstown/Chesterfield (via Bolsover)

Service 41.

East Midland Motor Services.

Shuttlewood, Chesterfield/Retford

Service 1.

Bolsover, Sheffield/Mansfield

Service 3.

Bolsover, Chesterfield/Warsop

Service 28.

Nearest Railway Station is Chesterfield, with

main line services to Sheffield, York, Leeds,

Newcastle, Manchester, Derby, Birmingham,

Leicester, Nottingham, Bristol, Cardiff and

London (St. Pancras).

YOUTH EMPLOYMENT At the County Library in Cotton Street.

9.30-12.00 Tues. and Thurs. Tel. Bolsover 2187.

OFFICE

OFFICE



# SPENCER & BROWN

**CHARTERED SURVEYORS, AUCTIONEERS  
VALUERS & ESTATE AGENTS**

**SALES BY AUCTION & PRIVATE TREATY**

**OF  
HOUSES · LAND & SHOPS  
VALUATIONS FOR ALL PURPOSES**

CHESTERFIELD, Burlington House Tel: 3247  
MANSFIELD, 5, Clumber Street Tel: 24568  
SUTTON-IN-ASHFIELD, Portland Square Tel: 3611  
SHEFFIELD, 15, St. James Row Tel: 70521

21

For Colour TV Service, Consult —

## **D. RILEY (Radio and Television) RADIO AND TELEVISION ENGINEERS**

*Sales and Service*

**H.P. RENTAL and SLOT RENTAL**

**Market Place · Bolsover**

Telephone : Bolsover 3398

19

## *Williams Carpets*

For a Complete Carpet Service you need  
go no further than 32 Welbeck Road

**AXMINSTER, WILTON & TUFTED**

**FREE**

\* Patterns in Home Service \* Measuring  
\* Planning \* Advice and Fitting

**CASH DISCOUNTS**

**32 WELBECK ROAD, BOLSOVER TEL 3395**

12

## **LOWE'S**

**2 MIDDLE STREET · BOLSOVER**

Telephone 2207

**SPECIALISTS IN READY MADE  
CURTAINS**

**FABRICS, TOYS AND DRAPERY**

**Also at MARKET PLACE**

Printed in Great Britain

28

EJBT/24/111

18